



KilnCoat 2100

DESCRIPTION

KilnCoat 2100 is water based ceramic coating formulated for spray brush or trowel-on application and is available in 5 gallon pails.

USES

KilnCoat 2100 was developed to act as a corrosion barrier on the internal metal surfaces of high temperature process equipment. Upon application to clean abrasive blasted surfaces, KilnCoat 2100 forms a *Diffusion Bond* with metal substrates at room temperature. Upon exposure to operation temperatures above 400° F (205° C), KilnCoat 2100 hardens into a durable ceramic coating that withstands flexing, and expansion. KilnCoat 2100 is used extensively in reducing atmospheres found in gasification reformers where feed stocks include bio-mass, pet coke, coal and other organic fuels. KilnCoat 2100 will withstand continuous exposure to 2100° F (1150° C).

APPLICATION

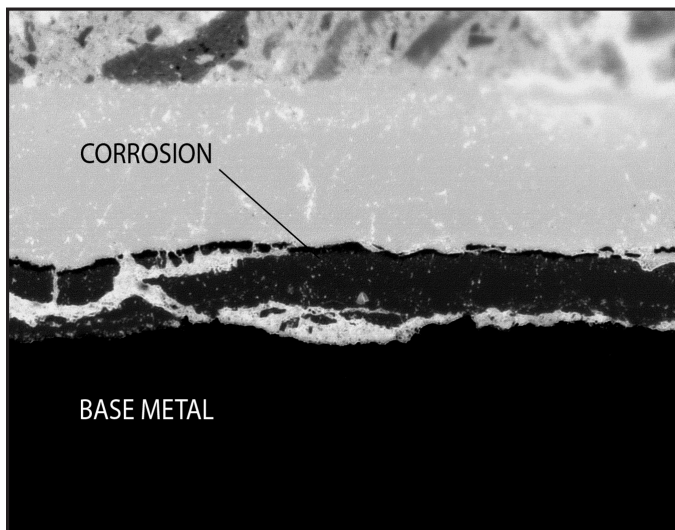
Before applying KilnCoat 2100 to steel surfaces, all metal contact points must be sand blasted to *Near White* metal, Nace 2, SSPC SP-10 finish. Abrasive blasted surfaces must be profiled to no less than 3.0 mils / 75 micron. Recommended application thickness of KilnCoat 2100 is 55-65 mil (1.4-1.6mm) Wet Film Thickness (WFT). This can be achieved in one coat on vertical and overhead surfaces. If a second coat is required, KilnCoat 2100 should be allowed to dry for a period of 12-24 hours. Forced air is recommended to accelerate cure time. KilnCoat 2100 contains no VOC's. KilnCoat 2100 cleans with soap and water. Please contact Matrix Solutions, LLC for more detail on industrial spray equipment recommendations.

STORAGE

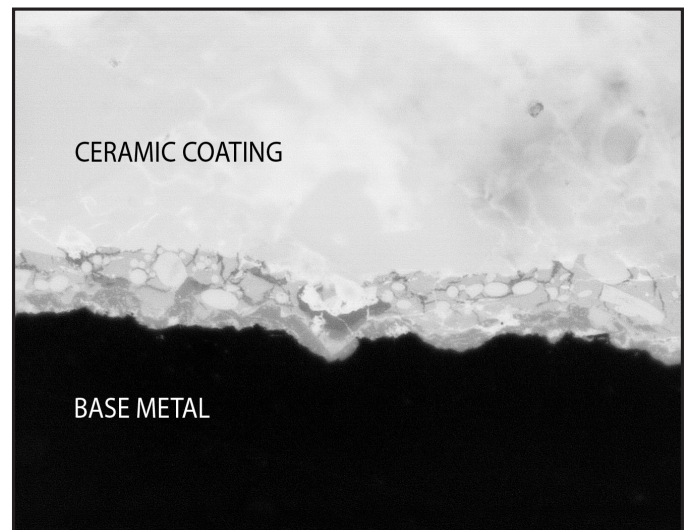
Do not store KilnCoat 2100 at or below freezing temperatures.

SINGLE TEST COUPON

120 HOURS @ 1400° F



UNCOATED



COATED

930X MAGNIFICATION

KilnCoat 2100

LIST OF MAJOR INGREDIENTS

Vitrified Ceramic Materials, Aluminosilicate
Water
Silica (Amorphous)
Hydrated magnesium aluminum silicate

TYPICAL PROPERTIES AND PERFORMANCE

Density, lbs./gal. 14.5
Coverage, SF per gallon (0.06" / 60 mil / 1.5 mm WFT) 25
Temperature Use Limit, deg. F. 2100
Appearance. Orange Paint/Paste
Percent Solids (approx.) 50%
Shelf Life (Unopened), Months 12
Dry to touch, hours 12-24
Linear Shrinkage (% , 24 hours @ 2300° F) 3.2
Mean Coefficient of Expansion (in/in deg. F). 3.0 X 10-6

CHEMISTRY

Al₂O₃ 37.2
SiO₂ 59.1
Na₂O 0.7
MgO 0.3
Fe₂O₃ 0.7
TiO₂ 1.4
Trace Inorganics 0.6

LIMITED WARRANTY

Matrix Solutions LLC makes no warranty, either express or implied, as to the quality, merchantability or fitness for any particular purpose of any products referred to and except as hereafter stated, makes no guarantee of results or of satisfaction from reliance upon the information of recommendations set forth. The buyer's or user's exclusive remedy and Matrix Solutions LLC sole limit of liability from any losses resulting from the use of said product shall be for the purchase price of the product causing the loss.

READ SDS SHEET BEFORE USE

MANUFACTURED FOR: REFRACTORY ANCHORS, INC.

DISTRIBUTED BY: MATRIX SOLUTIONS LLC
9836 S. 219th E. Ave. • Broken Arrow, OK 74014
918-455-1776 • FAX 918-455-9321
www.endcorrosion.com

KEEP OUT OF THE REACH OF CHILDREN • MADE IN U.S.A.

