



## Corr-FX 600

### DESCRIPTION

Corr-FX 600 is a high temperature water-based protective coating designed specifically for protecting mild steel surfaces from corrosion and oxidation from acidic, alkali and aggressive compounds. Because Corr-FX 600 is a water based emulsion, no protective breathing apparatus or special ventilation is required upon application. Corr-FX 600 is Class IIIB and can be transported as non-hazardous including air freight.

### USES

Corr-FX 600 is an asphalt based product that has been stabilized with refractory clay additives to enhance performance in tough industrial applications. Corr-FX 600 resists aqueous acids (10% aqueous), alkalis (10% aqueous) and various salts according to IAW Federal Specification TT-C-520B and MIL-C-62218A. In addition, Corr-FX 600 demonstrates fire resistance according to IWA Federal Specification TT-C-522B and Military Specification MIL-C-62218A. Corr-FX 600 is designed to be applied directly to steel surfaces with minimal preparation while providing dew point acid and alkali protection under refractory linings. Corr-FX 600 may be used behind refractory in applications at elevated temperatures up to 500° F with intermittent surges to 600° F.

### APPLICATION

Prior to application of Corr-FX 600, surfaces should be cleaned free of dirt or loose material to a minimum SP2. Corr-FX 600 may be brushed, troweled, rolled or sprayed onto metal surfaces. For spraying under a wide variety of spray conditions, a 30:1 ratio pump with a .027" orifice is recommended. A heavy film thickness (125 mils recommended) can be achieved with one coat on vertical surfaces with without sagging according to IWA Federal Specification TT-C-520B, MIL-C-62218A and ASTM B-B117. Tools and equipment should be cleaned with soap and water before Corr-FX 600 sets. Dried material can be cleaned with kerosene or petroleum naphtha.

### STORAGE

If material is stored below application temperature (min. 50° F), do not heat by any means. Move materials to storage area where application temperature can be achieved. DO NOT STORE Corr-FX 600 AT OR BELOW FREEZING TEMPERATURES. Freezing will cause product to separate.

### LIMITED WARRANTY

Refractory Anchors, Inc. makes no warranty, either express or implied, as to the quality, merchantability or fitness for any particular purpose of any products referred to and except as hereafter stated, makes no guarantee of results or of satisfaction from reliance upon the information of recommendations set forth. The buyer's or user's exclusive remedy and Refractory Anchors, Inc. sole limit of liability from any losses resulting from the use of said product shall be for the purchase price of the product causing the loss.

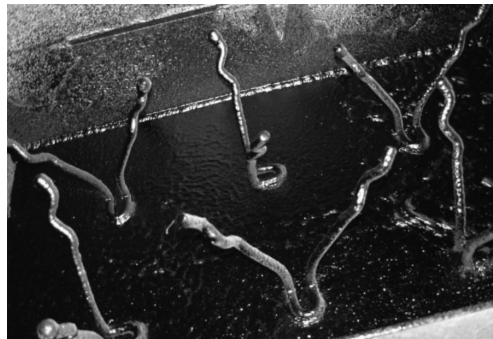
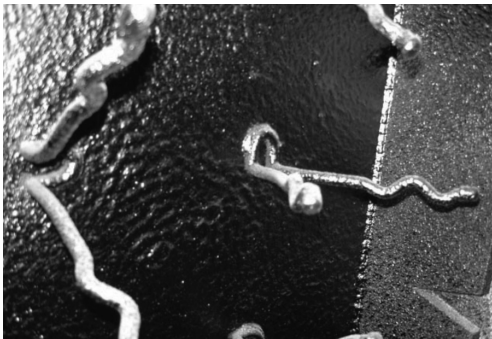
# Corr-FX 600

## LIST OF MAJOR INGREDIENTS

Asphalt  
Refractory Materials  
Water

## TYPICAL PROPERTIES AND PERFORMANCE

Density, lbs./gal .....	9.3
Solids Content, % by Weight .....	55.1
Refractory Content, % by Weight .....	16.2
Asphalt Content, % by Weight .....	38.9
Coverage Approx. 1/8" Wet Film Thickness .....	13 SF/Gal.
Dry Time, Hours @ 77° F	
To Touch .....	2-4
Refractory Application .....	12-24
Specific Gravity .....	1.12
Color	
Wet .....	Dark Brown
Dry .....	Black
Water resistance (ASTM-D-2939-94)	
Blistering .....	None
Re-emulsification .....	Nil
Consistency .....	Semi-Paste
Volatile Organic Content (EPA Method 24) .....	0.2 lbs./gal.
Flash Point Pensky Martens Closed Cup, Deg. F, Min. ....	N/A
Application Temperature Range, Deg. F. ....	50-120
Stability .....	Protect from freezing



READ MSDS SHEET BEFORE USE • MANUFACTURED FOR

**Matrix Solutions LLC**

918.455.1776 • Fax 918.455.9321 • [endcorrosion.com](http://endcorrosion.com)

9836 S 219th E Ave • Broken Arrow, OK 74014

KEEP OUT OF THE REACH OF CHILDREN • MADE IN U.S.A.